





# Macroinvertebrate Size Chart










Macroinvertebrates may be smaller or larger than the pictures. Actual size ranges are listed.

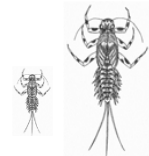

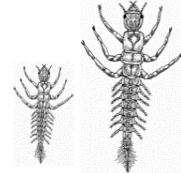


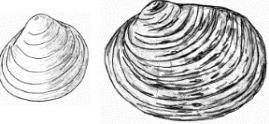
## Very Small

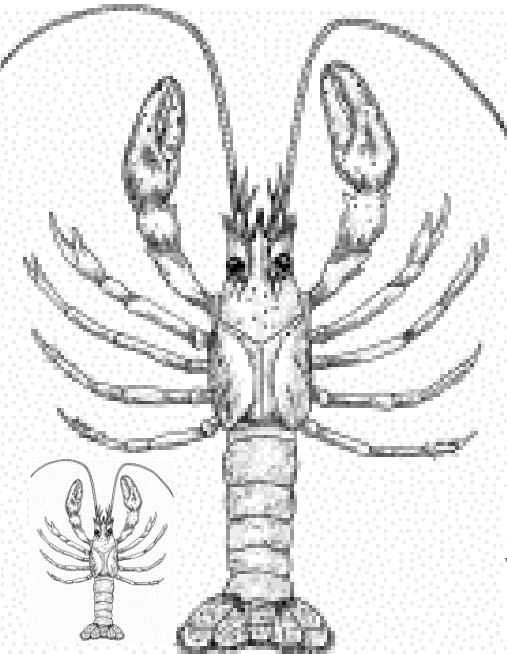
-  Midge 1/8 to 1/4 in
-  Blackfly 1/8 to 1/4 in
-  Riffle Beetle (Larvae) 1/8 to 1/2 in
-  Riffle Beetle (Adult) 1/16 to 1/8 in

## Small

-  Scud 1/8 to 1/4 in
-  Sowbug 1/4 to 3/4 in
-  Water Penny 1/4 to 1/2 in
-  Net-spinning Caddisfly 1/4 to 1 in
-  Leech 1/4 to 2 in
-  Worm 1/4 to 2 in
-  Watersnipe Fly 1/4 to 1 in

## Size Varies

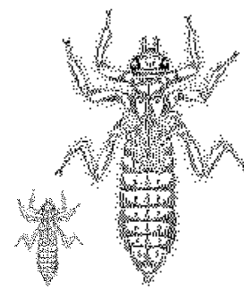
-  Mayfly 1/4 to 1 in
-  Caddisfly 1/2 to 1 1/2 in
-  Alderfly 1/2 to 1 1/2 in
-  Gilled Snail 1/16 to 3/4 in
-  Lunged (orb) Snail 1/8 to 1 in
-  Clams & Mussels 1/8 to 5 in



Crayfish  
1/2 to 5 in



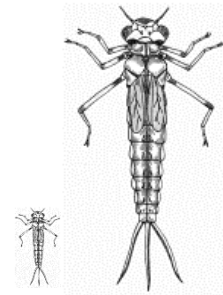
Dobsonfly (Hellgramite)  
3/4 to 4 in



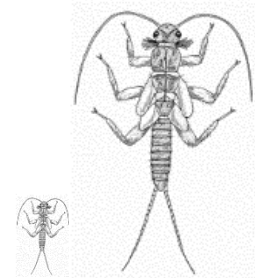
Dragonfly  
1/2 to 2 in



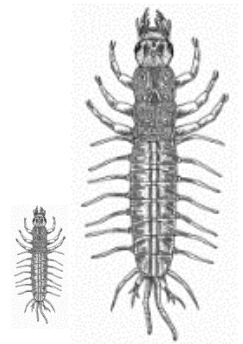
Crane Fly  
1/3 to 2 1/2 in



Damselfly  
1/2 to 2 in



Stonefly  
1/2 to 1 1/2 in



Fishfly  
3/4 to 4 in